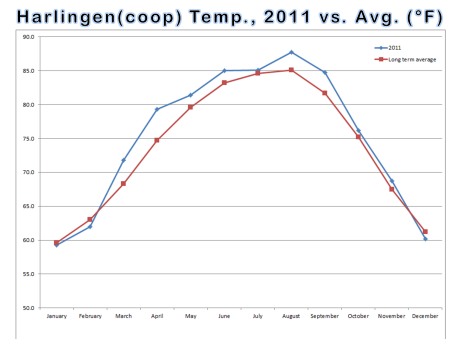
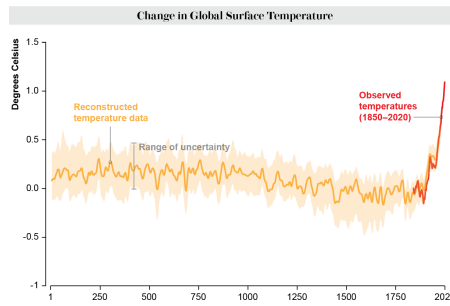
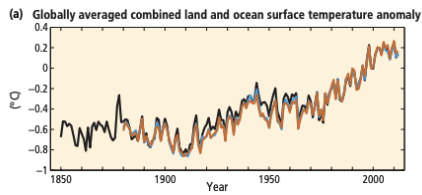


Identify the X and Y Axis



What year does this data start?

Why is the temperature range so small?

What does an anomaly mean?

When does this graph start?

What is the range of uncertainty?

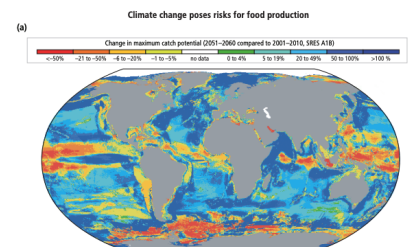
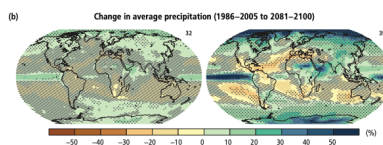
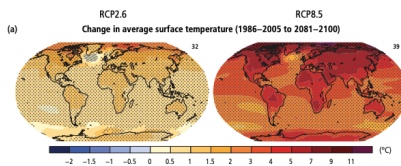
Where did the temperature data come from before there were instruments?

When does this graph start?

Why is it important to look at the time scale when thinking about climate change?

Can we look at a single day's temperature and say whether climate change is happening?

Pay Attention to the Title and the Key



What is this graph measuring?

What does the blue area mean?

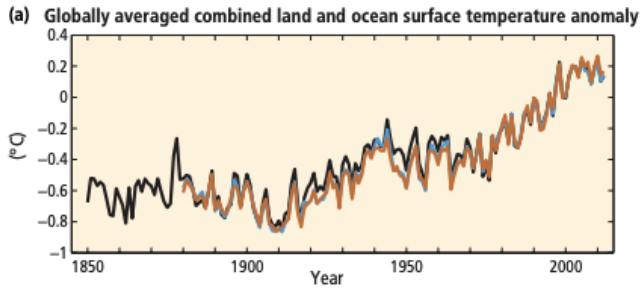
What is this graph measuring?

What does the blue area mean?

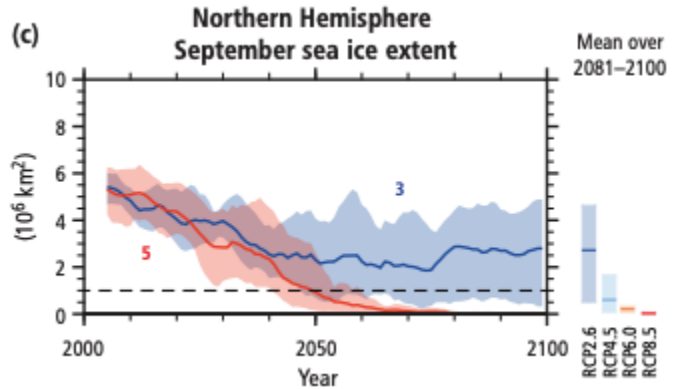
What is this graph measuring?

What does the blue area mean?

What is the Trend?

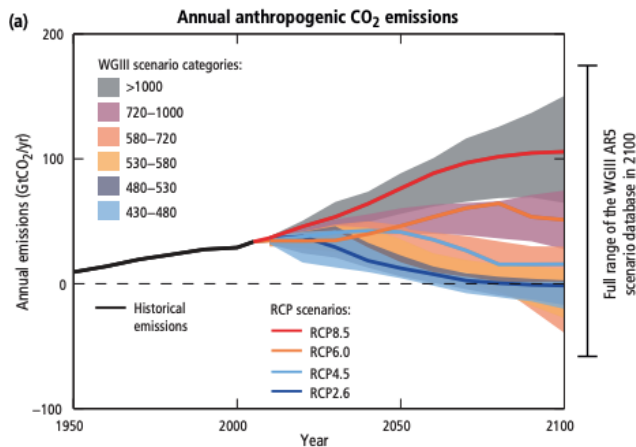


What is the trend of this graph? Is it positive, negative, stays the same?



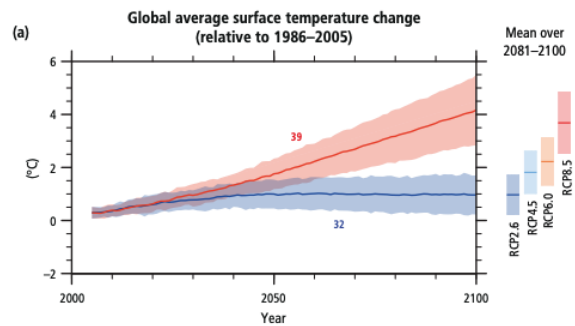
What is the trend of this graph? Is it positive, negative, stays the same?

Why are There Multiple Lines on this Graph?



Sometimes different lines mean different scenarios.

How do scientists predict that humans will curb their emissions in the future



Sometimes different data comes from different climate models and report slightly different findings.

Remember that climate is very complicated, change one variable and many other outcomes can change